

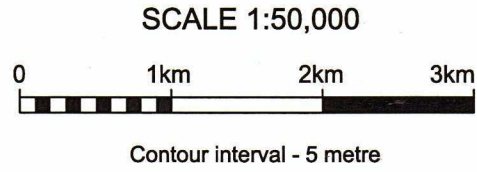
The Western Australian Rogaining Association proudly presents...

MALLEE FOWL REPLAY

AUTUMN 12 HOUR ROGAINE 5TH MAY 2012



Incorporating the Paddy Pallin Cadet Challenge



LEGEND

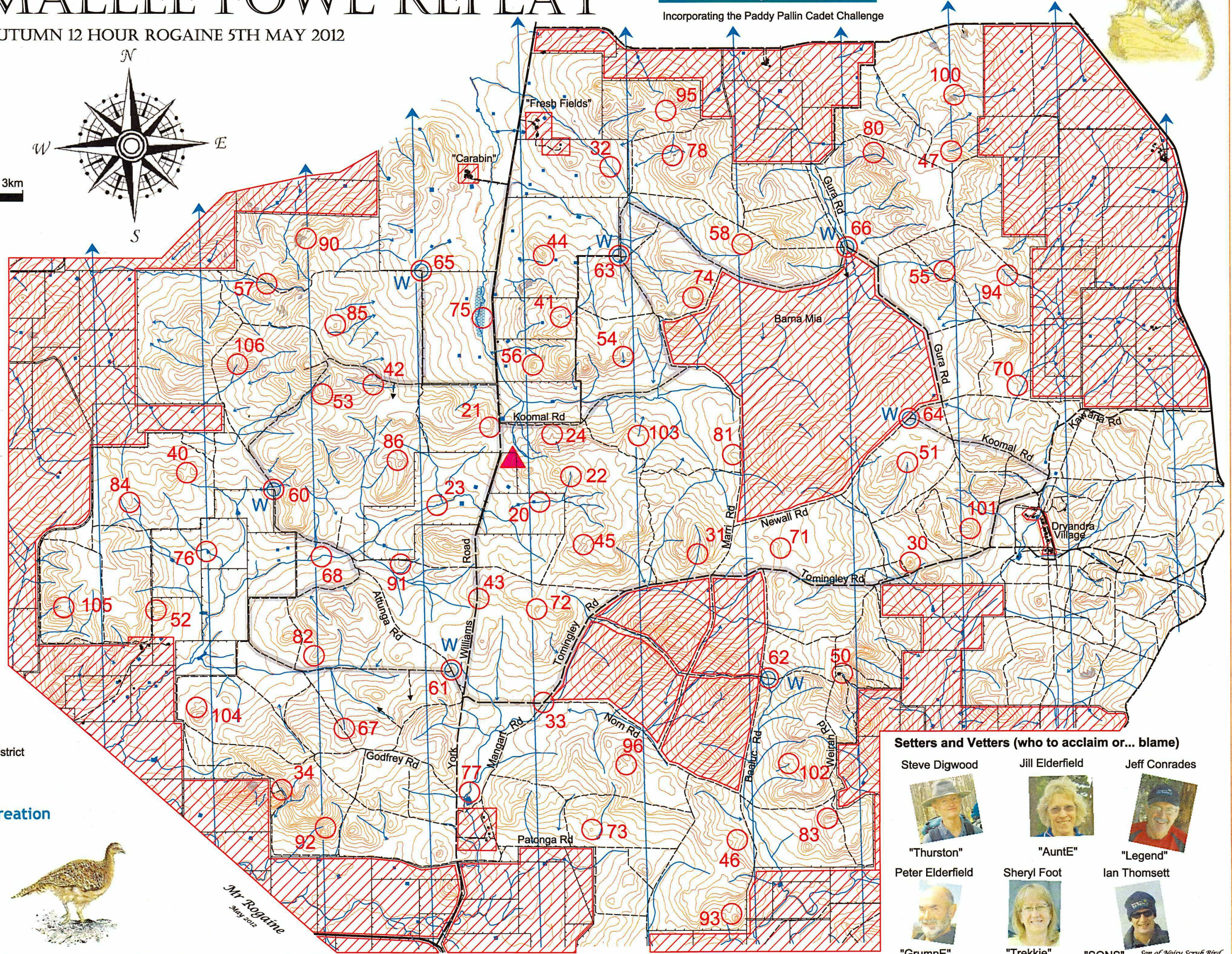
- Building
- Continuations
- Control
- Contours
- Dam
- Fence
- Hash House
- Magnetic North Line
- Marshy Ground
- Out of Bounds
- Patrolled Road
- Road, Sealed
- Road, Major Gravel
- Road, Minor Gravel
- Watercourse
- Water Drop

Thanks to:

- Barry & Isobell Hardie
- Mark & Mel Browne
- Fred & Jane Shepard
- Matthew Harding of DEC Narrogin District



Mr Rogaine
May 2012



Setters and Veters (who to acclaim or... blame)

 Steve Digwood "Thurston"	 Jill Elderfield "AuntE"	 Jeff Conrades "Legend"
 Peter Elderfield "GrumpE"	 Sheryl Foot "Trekkie"	 Ian Thomsett "SONS" <i>Son of Noisy Scrub Bird</i>

This map was produced using OCAD 9 by the Western Australian Rogaining Association, wa.rogaine.asn.au. Data supplied by Landgate and used under copy licence 393/93. Possession of this map does not give right of entry to this area.

MALLEE FOWL REPLAY 12HR ROGAINE - MAY 5TH 2012

CONTROL DESCRIPTIONS

No.	Description	Points	No.	Description	Points	Additional information
20	The watercourse	20	70	A knoll	70	Key event times Map collection from 0700 Saturday Novice briefing at 0900 Saturday Event briefing at 0945 Saturday Event commences at 1000 Saturday Event finishes at 2200 Saturday
21	The spur	20	71	The small spur	70	
22	The watercourse	20	72	The knoll	70	
23	The burst dam - on the wall	20	73	The knoll	70	
24	The spur	20	74	The knoll - southern end	70	
			75	Remnant of an old water tank	70	
30	The knoll	30	76	The dam - western side	70	
31	The watercourse	30	77	The watercourse - under a disused bridge	70	
32	The watercourse	30	78	The rock surface 15x35m - western edge	70	
33	The road junction - 50m @ 130 degrees	30				
34	The watercourse - head of	30	80	The spur - rocky	80	
			81	The spur	80	
40	The saddle	40	82	The spur	80	
41	The knoll	40	83	The knoll	80	
42	A watercourse junction	40	84	The spur	80	
43	Jamwood post - a historic site	40	85	The knoll	80	
44	The knoll - southern end	40	86	The saddle	80	
45	A watercourse	40				
46	The spur	40	90	The rock surface 200x150m - north eastern edge	90	Astrological data Sunset - Saturday 1735 End of civil twilight - Saturday 1758 Moon rise - Saturday 1647 Moonphase Saturday - Waxing Gibbous (Full moon on Sunday May 6th)
47	A watercourse junction	40	91	The knoll	90	
			92	The saddle	90	
50	The gully	50	93	The saddle	90	
51	The watercourse end	50	94	The watercourse	90	
52	The knoll - western end	50	95	The saddle	90	
53	The gully	50	96	The gully	90	
54	The watercourse	50				
55	The knoll	50	100	The watercourse - head of	100	
56	The knoll - southern end	50	101	The spur	100	
57	The track and watercourse junction	50	102	The watercourse - head of	100	
58	A breakaway 2m high - foot of	50	103	The water course - head of	100	
			104	The gully	100	
60	The fence corner	60	105	The saddle	100	
61	The track junction	60	106	The watercourse - head of	100	
62	The track and watercourse intersection	60				
63	The fence corner	60				
64	The track junction - 50m @ 170 degrees	60				
65	The fence corner	60				
66	The track and watercourse intersection - south side	60				
67	The watercourse	60				Penalties 10 points per minute late or part thereof Being more than 30 minutes late means disqualification
68	A collapsed and disused rail bridge - north side	60				
				Sporadic mobile phone coverage is available for Telstra customers		
				In the event of an emergency call Warren Smith on 0407 773 697		
				However, note the rules regarding the use of mobile phones		
				Patrol roads will be driven at least every 3 hours		
				Look for the vehicles with the green flashing light		